

Cheyenne U

Cheyenne Greenways and Trails

Richard Zita, Greenway / Park Project Manager
City of Cheyenne

October 3, 2019

What is the Greater Cheyenne Greenway and Why are we talking about it ?

- A 39 mile long alternative transportation and recreation system that connects neighborhoods, schools and parks to public and private facilities and events. Includes Greenways, Shared Paths, Bike Lanes and Mountain Bike Trails.
- It is for bike riders, pedestrians, runners, dog walkers, strollers and all other non-motorized travelers. Unicycles and Type I, II Ebikes are also welcome!
- It is a significant component of Cheyenne's 'quality of life' and is becoming a significant component of economic development and health planning.

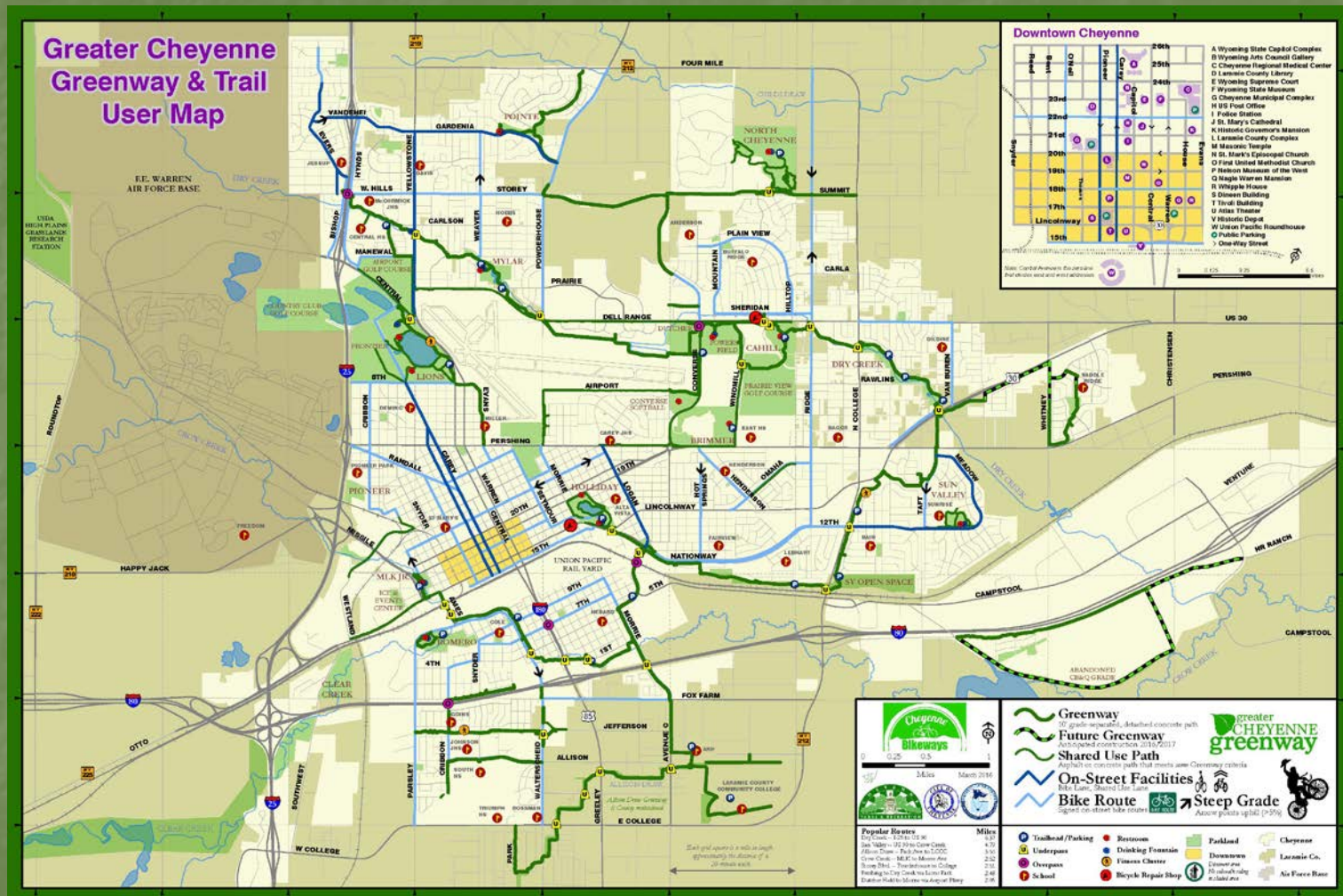
Greenway Today



Planning & Spending Effort

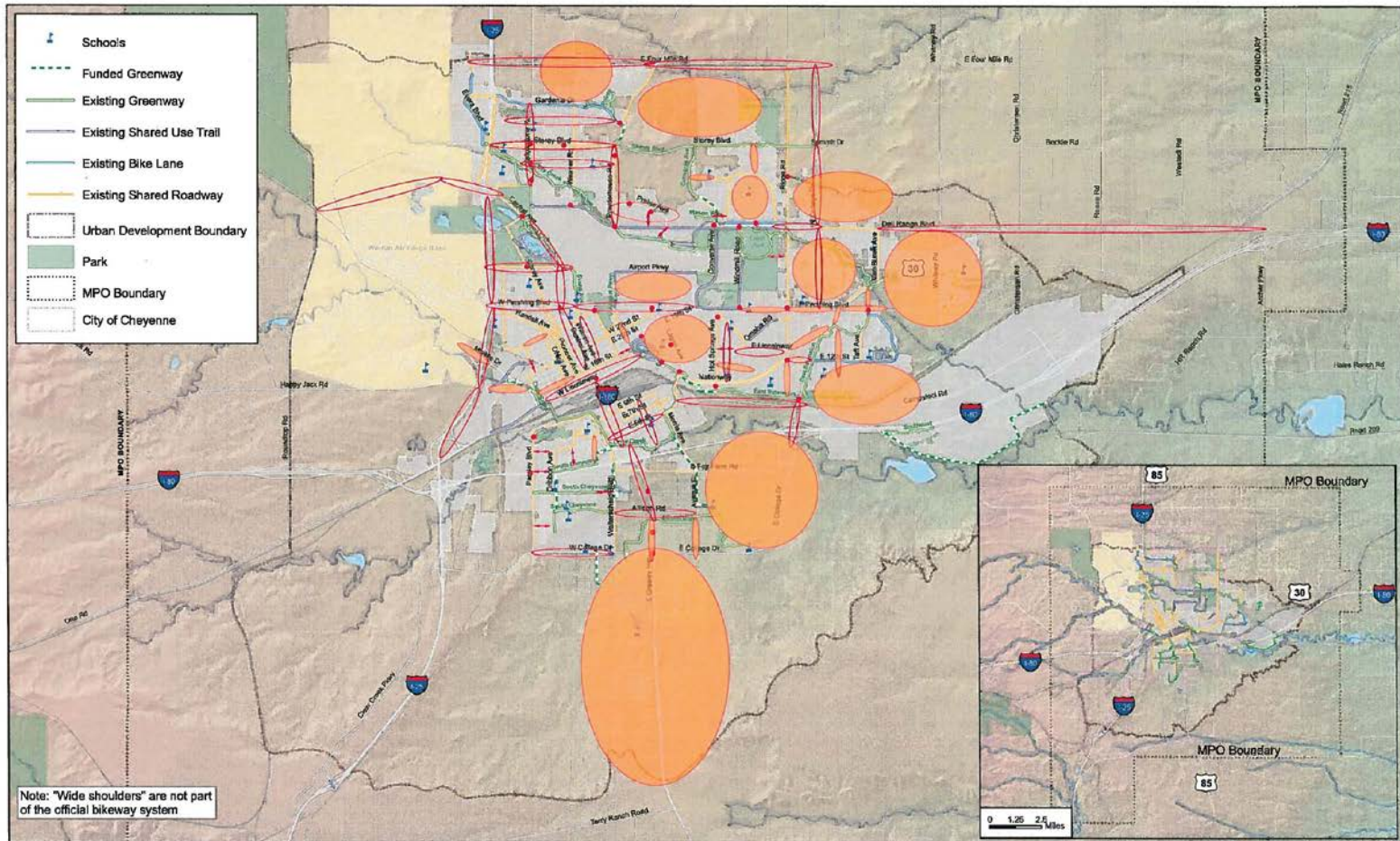
- Two Wheeling in Cheyenne 1975
- Cheyenne Biking System 1977-1978
- South Cheyenne Biking Plan 1984
- Cheyenne Biking Study 1987
- Cheyenne Greenway Development Plan 1992
- Cheyenne Area On-Street Bicycle Plan 1993
- Plan Cheyenne Comprehensive Plan 2005
- Cheyenne Area On-Street Bicycle Plan and Greenway Update 2012
- 6th Penny Ballot 2012, 2016
- \$3.7 million in state grants, \$10.1 million in local citizen sponsored taxes

The Cheyenne Greenway System



Currently 39 miles of Greenway, 17 of Shared Paths, 10 of bike lanes

Gap Analysis



Map 1. Draft Bicycle System Gap Analysis

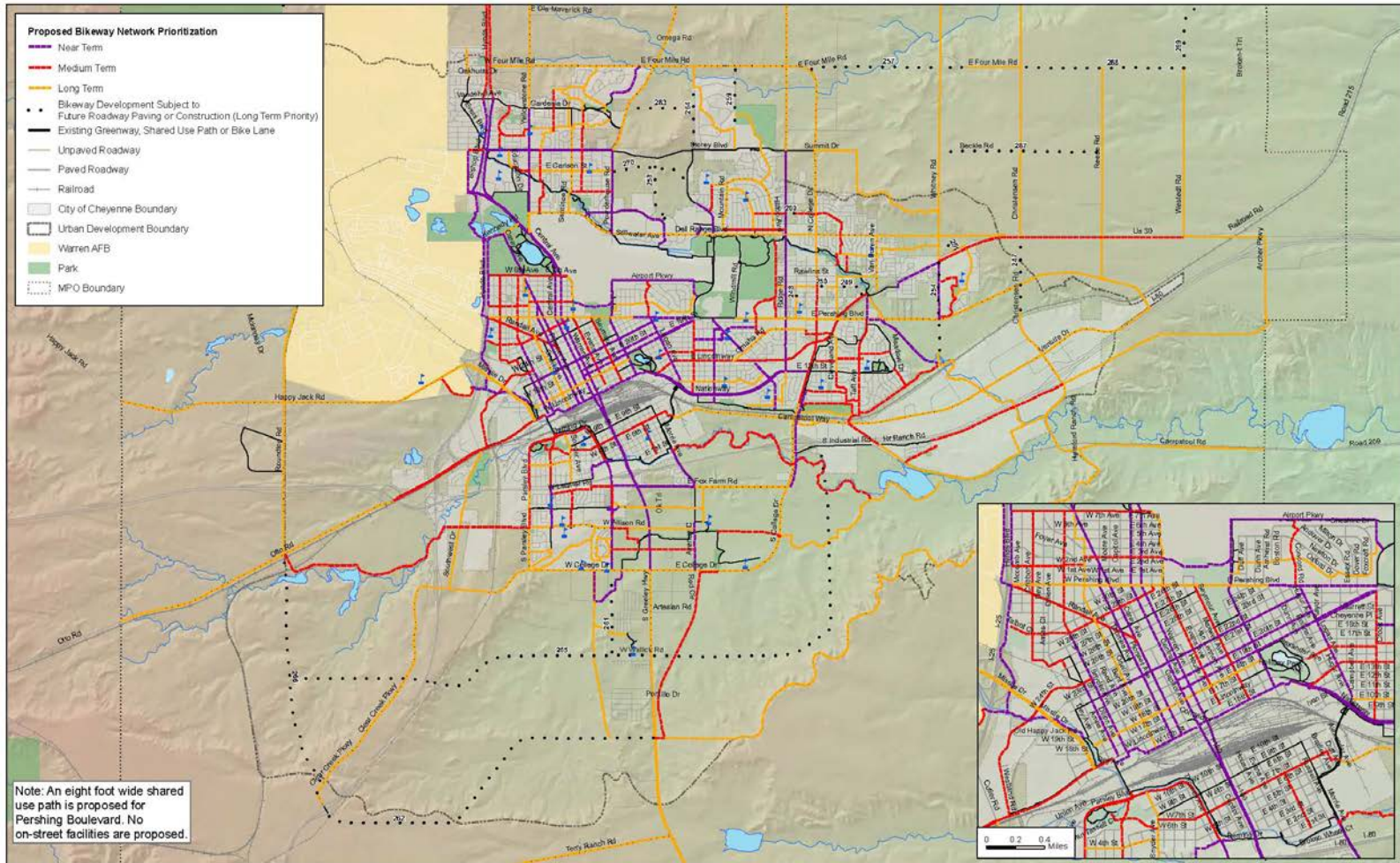
Cheyenne On-Street Bicycle Plan
and Greenway Plan Update
Source: Cheyenne - Laramie County Cooperative GIS Program
Date: May 2011

• Spot Gap
→ Connection Gap
○ Corridor Gap
○ System Gap

VOLUME II PAGE 122



2012 Master Plan

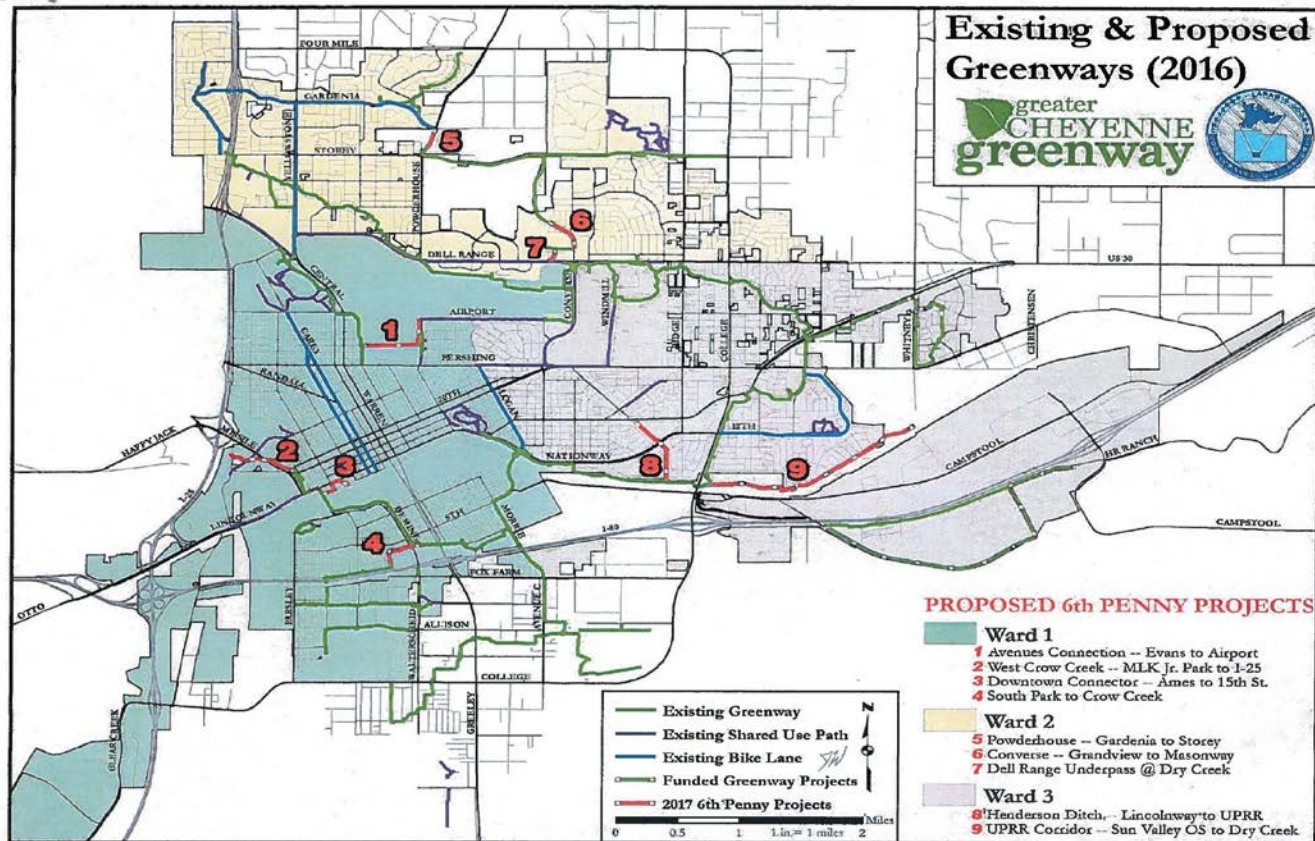


Map 4. Proposed Bikeway Network Prioritization

Cheyenne On-Street Bicycle Plan
and Greenway Plan Update
Source: Cheyenne - Laramie County Cooperative GIS Program



2017 6th Penny Ballot

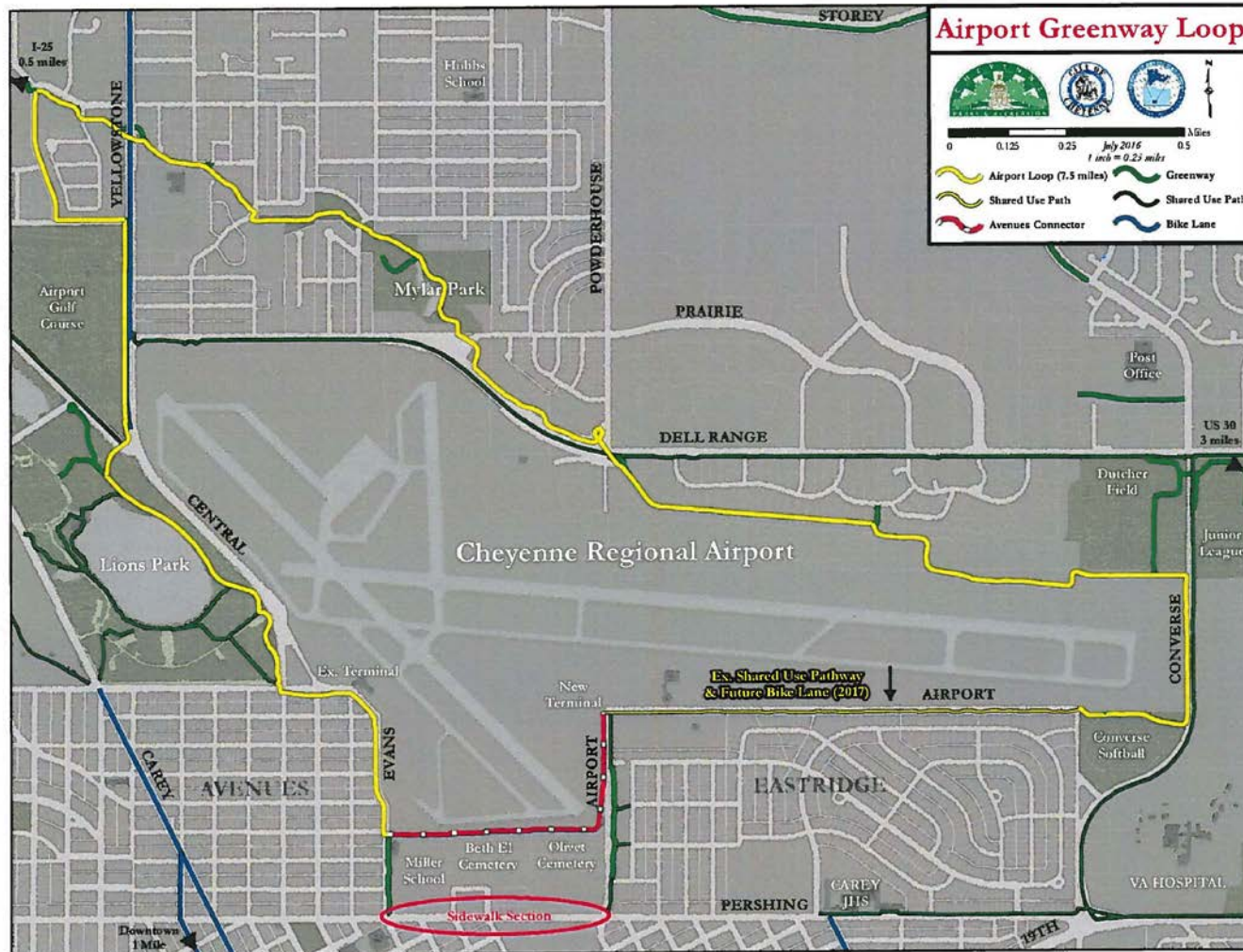


\$3 Million for Greenway development, \$800,000 for O/M

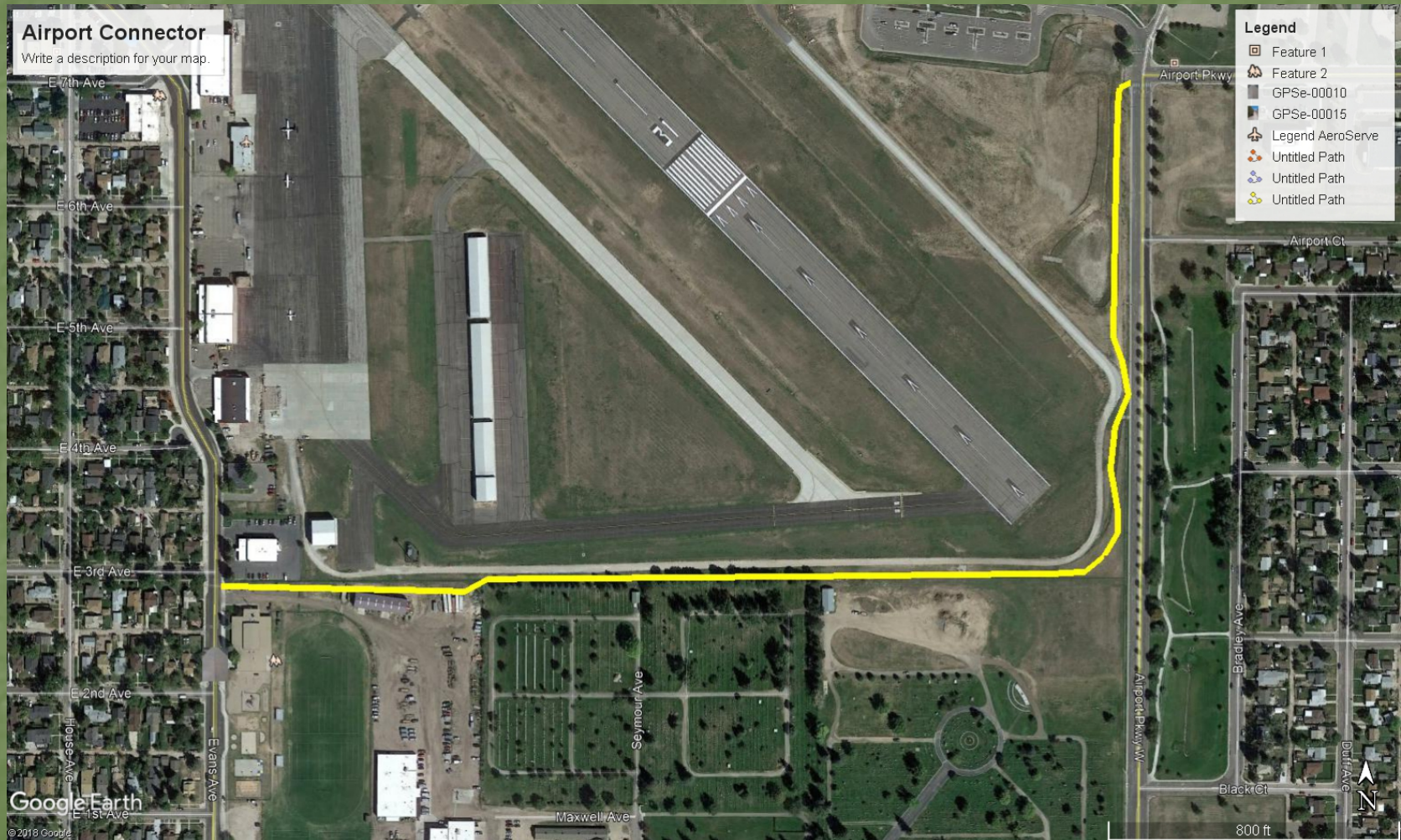
Current Projects

- Avenues Connector to Eastridge
- Powderhouse Connector
- Henderson Ditch to Sun Valley Greenway
- South Park Connector to Crow Creek
- Cowboy Dodge Connector
- Dey Avenue from MLK Park to Ames
- Downtown Connector to Depot Plaza
- Reed Avenue Corridor – An Urban Trail
- Wayfinding and Adopt-a-Spot Signs
- Fix-it Stations
- Bike Counts
- Updated Greenway Map

Avenues Connector/Airport Loop



Airport Connector



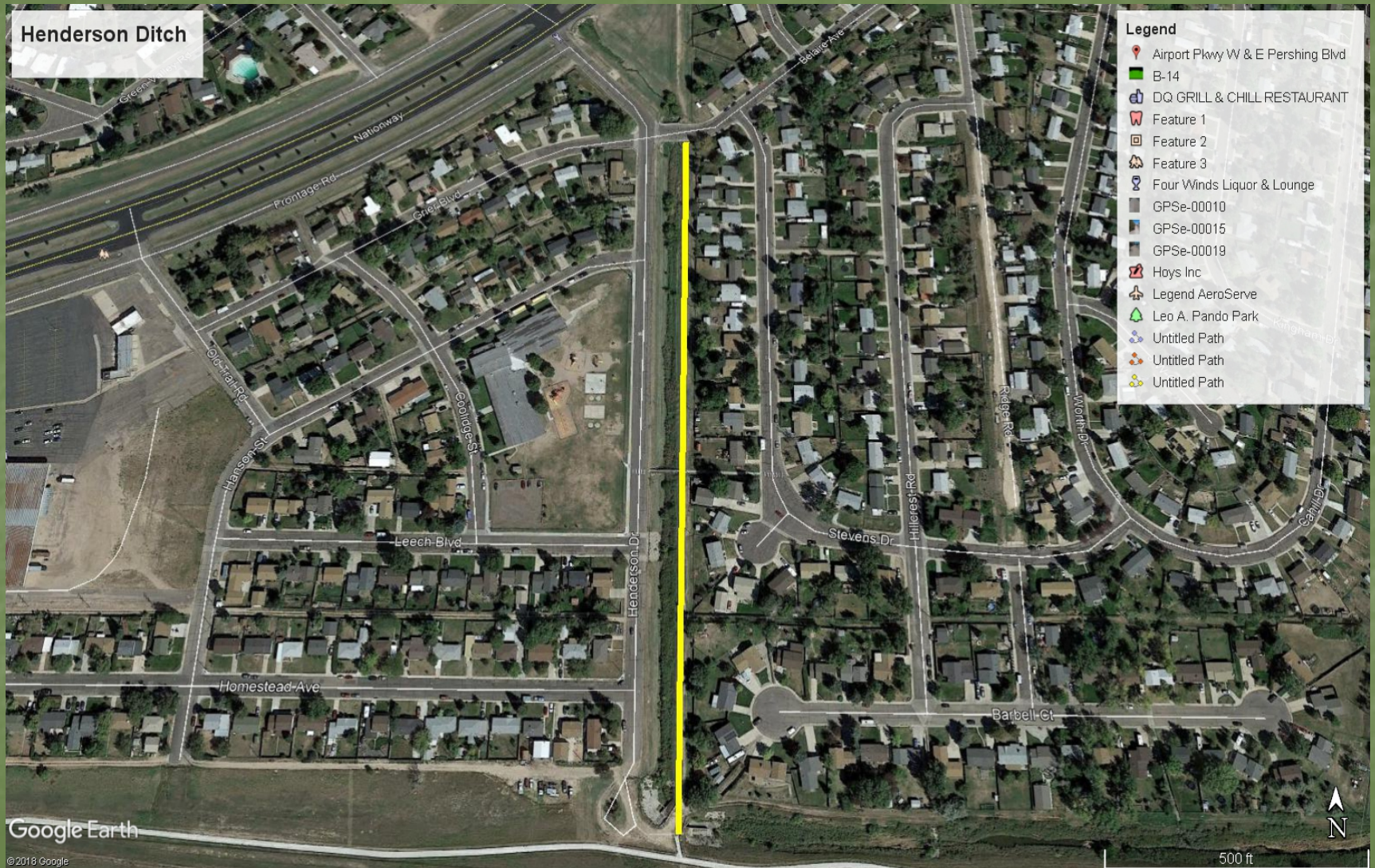
Alternate Concept



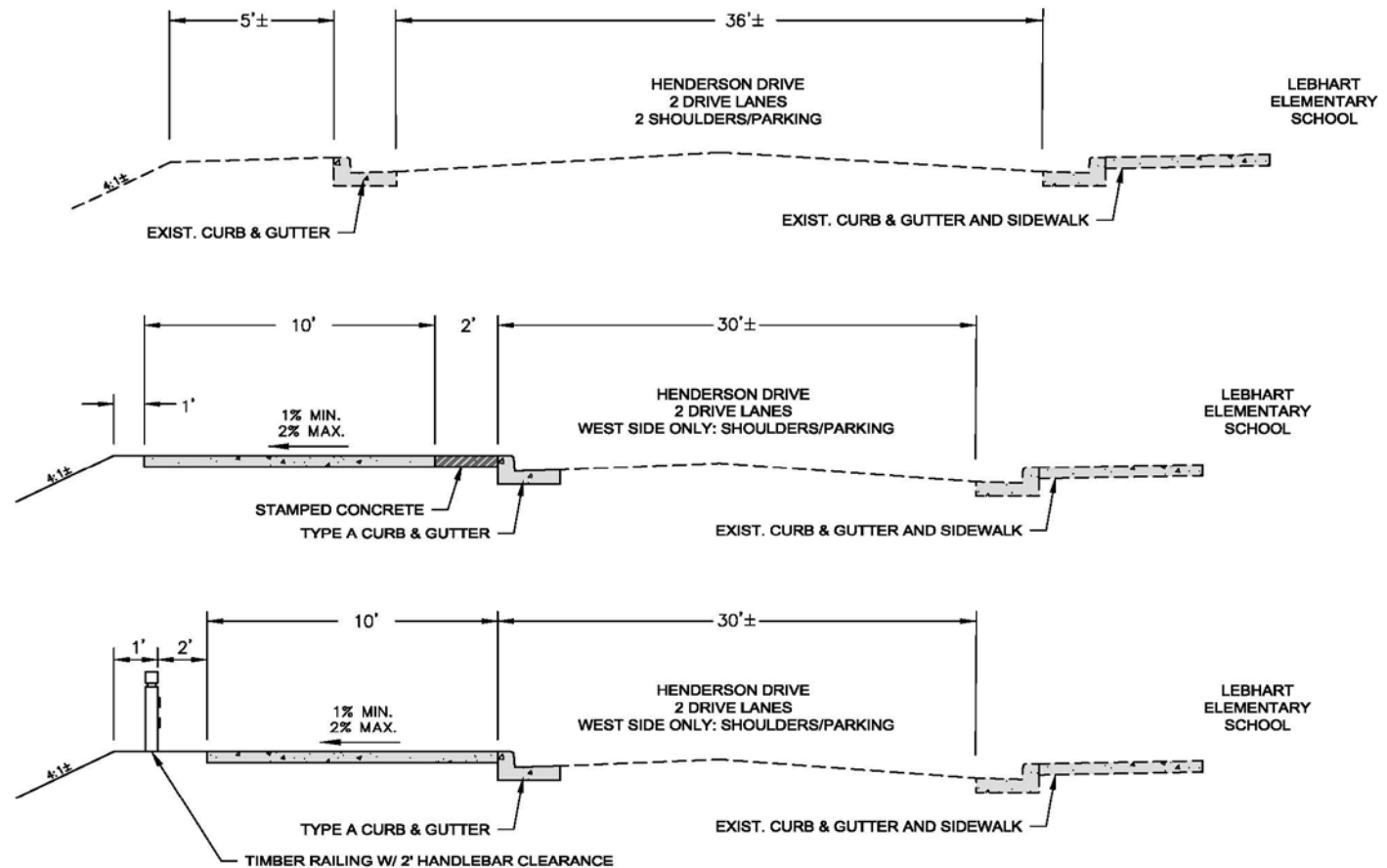
Powderhouse Connector



Henderson Ditch

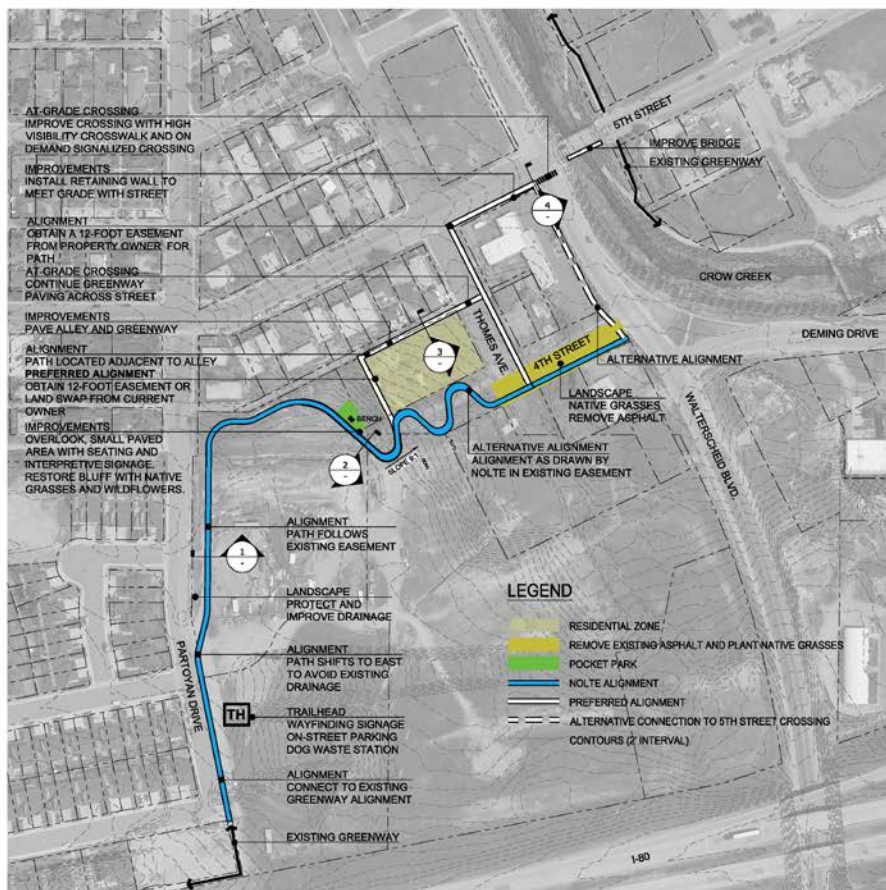


Henderson Sections

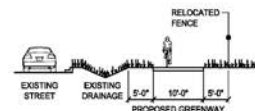


**TYPICAL SECTION - HENDERSON SEGMENT
(ADJACENT TO HENDERSON DRIVE)**

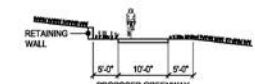
South Park Connector



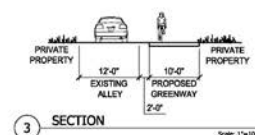
CONCEPTUAL
NOT FOR CONSTRUCTION



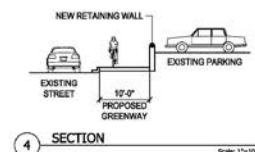
1 SECTION
Scale: 1"=10'-0"



2 SECTION
Scale: 1"=10'-0"



3 SECTION
Scale: 1"=10'-0"



4 SECTION
Scale: 1"=10'-0"

Project Description

This greenway segment will create a connection between two existing greenways, South Park Estates on the west and Crow Creek on the east. The South Park Estates Greenway extends from Cribbon Avenue to Partoyan Drive. The City of Cheyenne worked with Nolte Engineering to develop an alignment for this proposed connection and an easement was obtained for that alignment, as shown in blue. The preferred option for the developer and the landowner, however, required crossing Walterscheid at 4th Street. The proposed crossing was not desirable for the City for safety reasons. A new alternative alignment, in white, is shown on this project sheet.

At Partoyan Drive, a trailhead is located with wayfinding signage and on-street parking. The proposed trail will parallel Partoyan Drive within an established easement along a drainage ditch. The greenway turns east to the top of a bluff. At the top of the bluff, a seating area is proposed with interpretive signage that takes advantage of the spectacular views of downtown Cheyenne. Where the greenway is not in a street right-of-way (ROW), pedestrian-scaled lighting will be spaced every thirty feet for safety and comfort.

From the bluff, the greenway would go downhill to a residential parcel. The preferred alignment west and north follows the edge of the parcel to the alley and continues to Thomes Avenue. A land swap would trade private land for the 4th Street right-of-way to the west of Thomes Avenue. If a land swap or easement can not be obtained from the landowner, route greenway through the existing alley and sign for mixed-use traffic.

At Thomes Avenue, the concrete path crosses the street, to maintain consistency and legibility, and continues to 5th Street. At 5th Street, the block will be reconstructed to accommodate the 10-foot wide greenway to Walterscheid Boulevard. At Walterscheid, high visibility crosswalk markings and a signalized crossing are proposed for the at-grade roadway crossing.

Proposed Improvements

- 10-foot wide concrete multi-use path from South Park Estates to Crow Creek
- Pedestrian-scaled lighting every 30 feet along the trail
- Enhancements to existing drainage on the east side of Partoyan Drive
- Overlook area at the top of bluff with seating, interpretive signage, and a trash receptacle
- Retaining walls for the steep slope area
- Greenway paving to cross Thomes Avenue, maintaining the route's legibility.
- Signage and a high-visibility crosswalk at the intersection of 5th Street and Walterscheid Boulevard

Project Summary

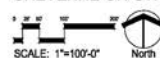
- 2,200 feet of 10-foot wide concrete greenway (for the preferred alignment)
- Trailhead and wayfinding signage
- One bench and trash receptacle
- Interpretive signage
- 51 pedestrian-scaled light fixtures
- One at-grade trail/roadway crossing

SOUTH PARK EXTENSION

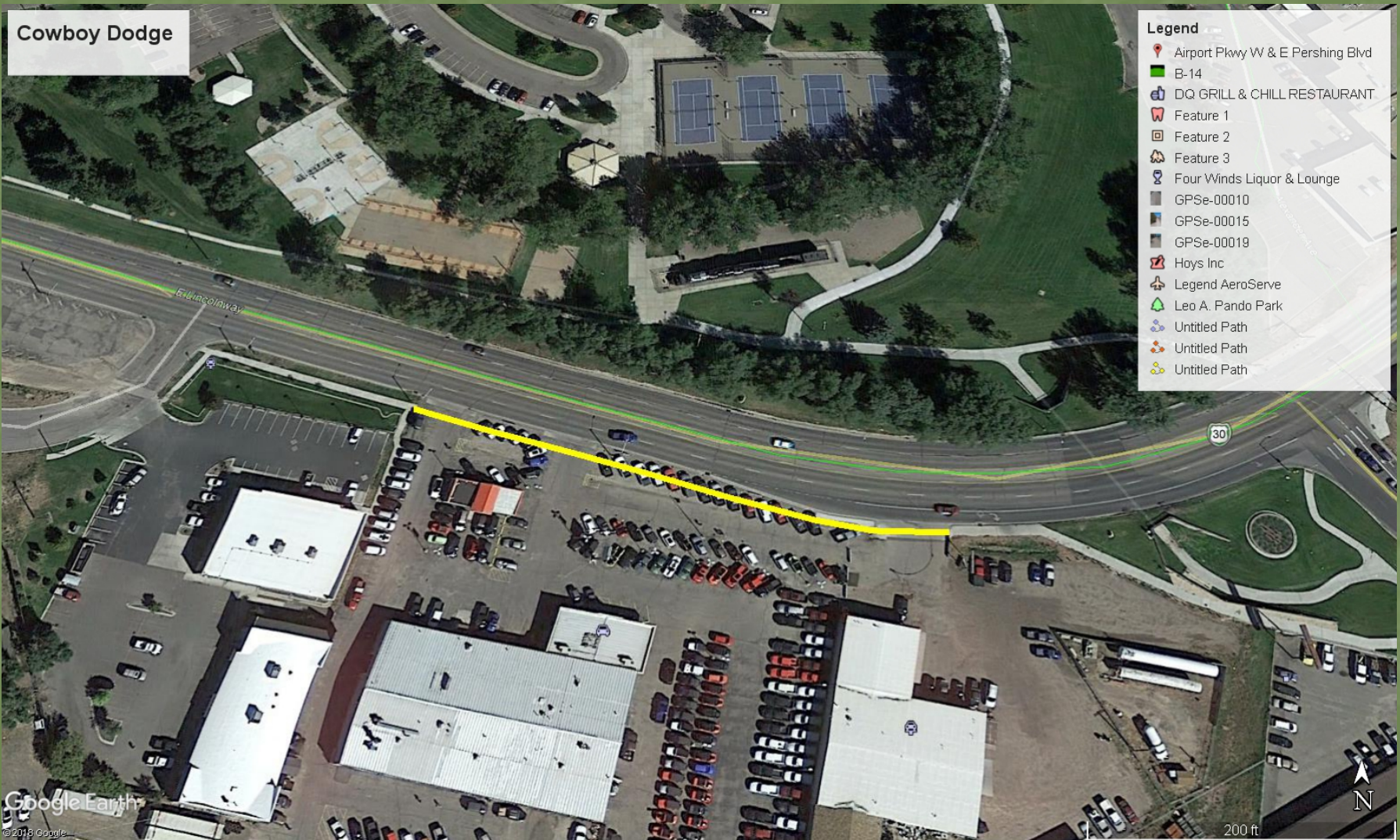
CHEYENNE ON-STREET BICYCLE PLAN AND GREENWAY PLAN UPDATE

JANUARY 2012

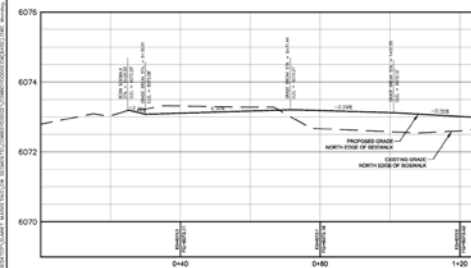
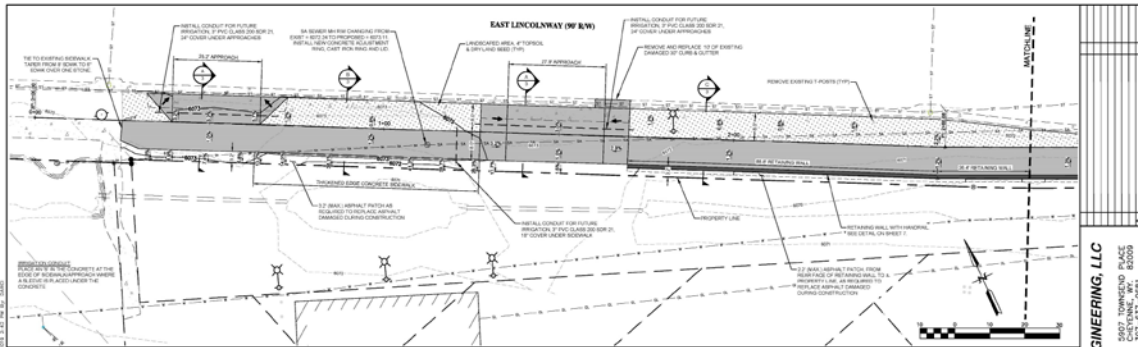
CHEYENNE, WY



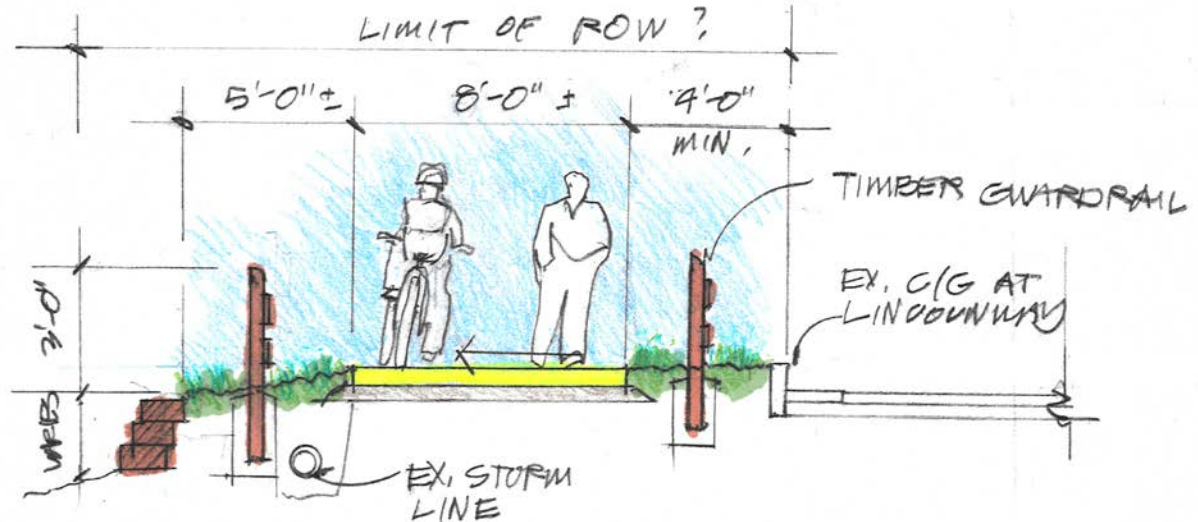
Cowboy Dodge



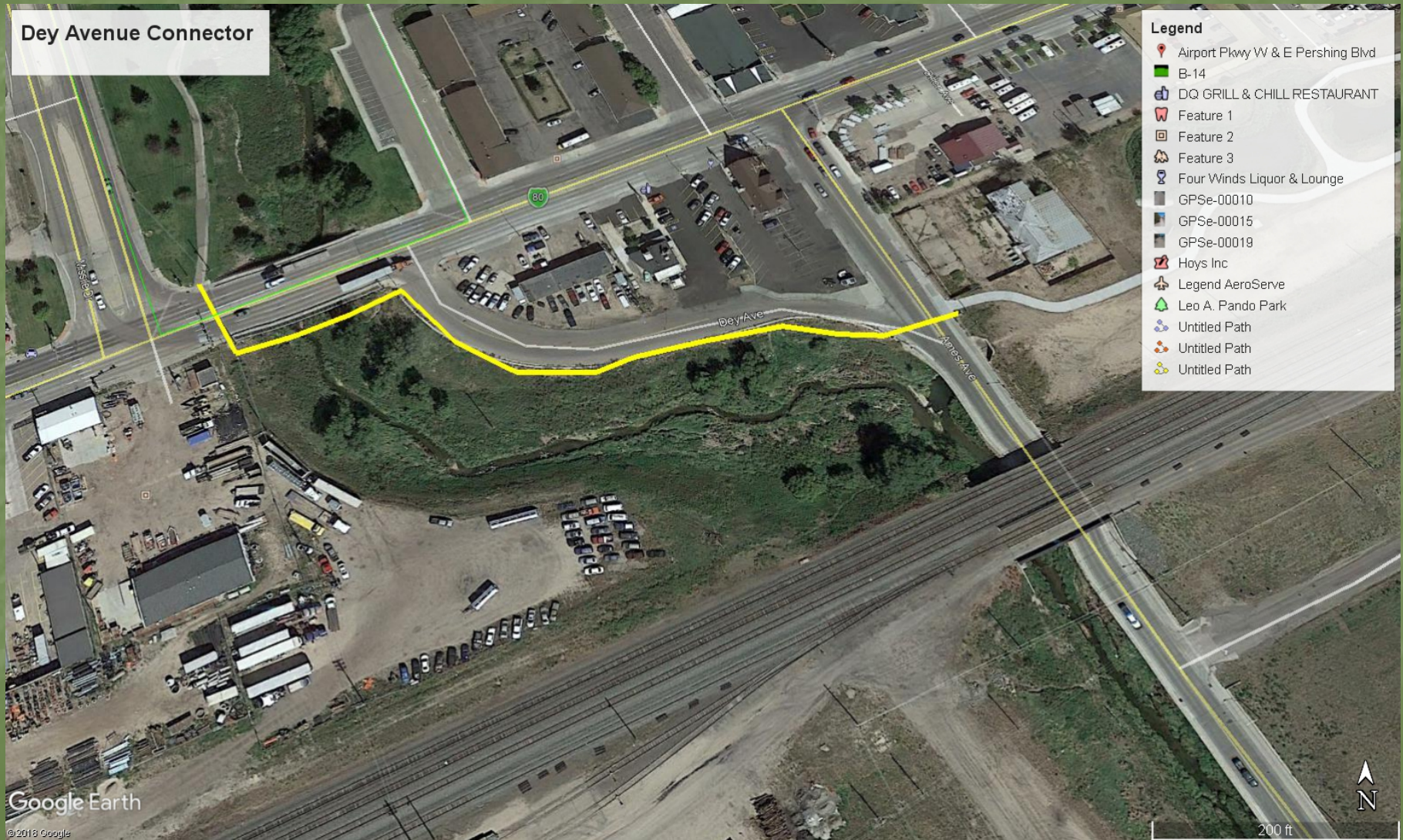
Plans



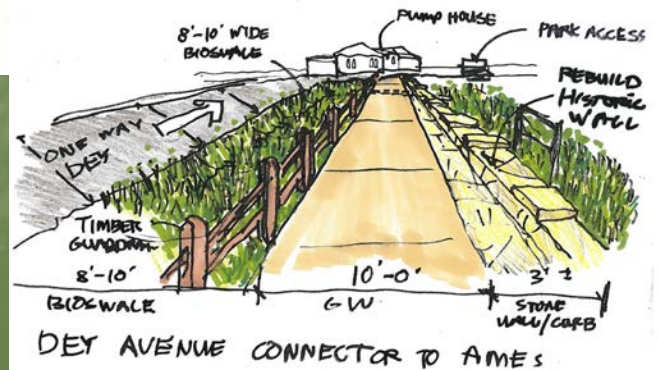
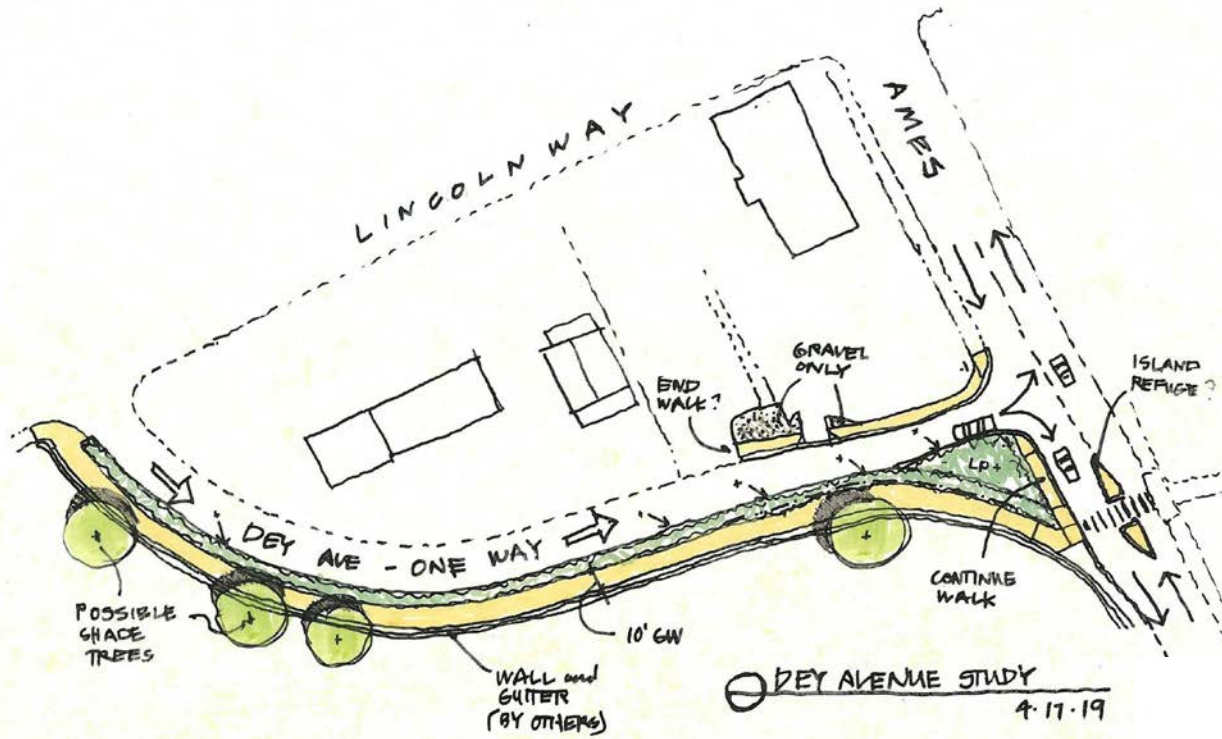
DATE	10/1/2014
BY	Summit Engineering, LLC
CHECKED	Summit Engineering, LLC
APPROVED	Summit Engineering, LLC
PROJECT	107-1537-0081
DESCRIPTION	RECONSTRUCTION OF LINCOLNWAY



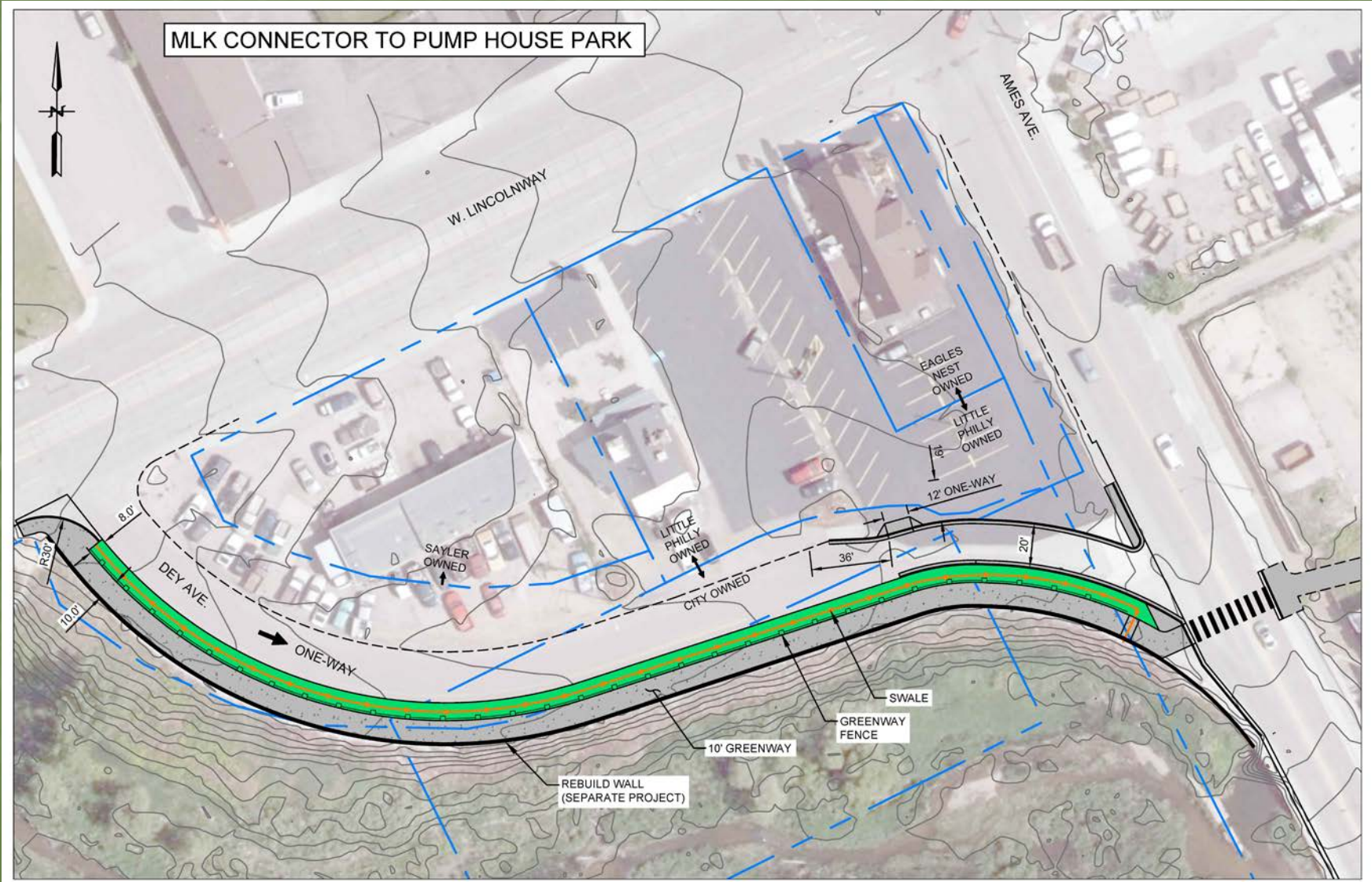
Dey Avenue Connector



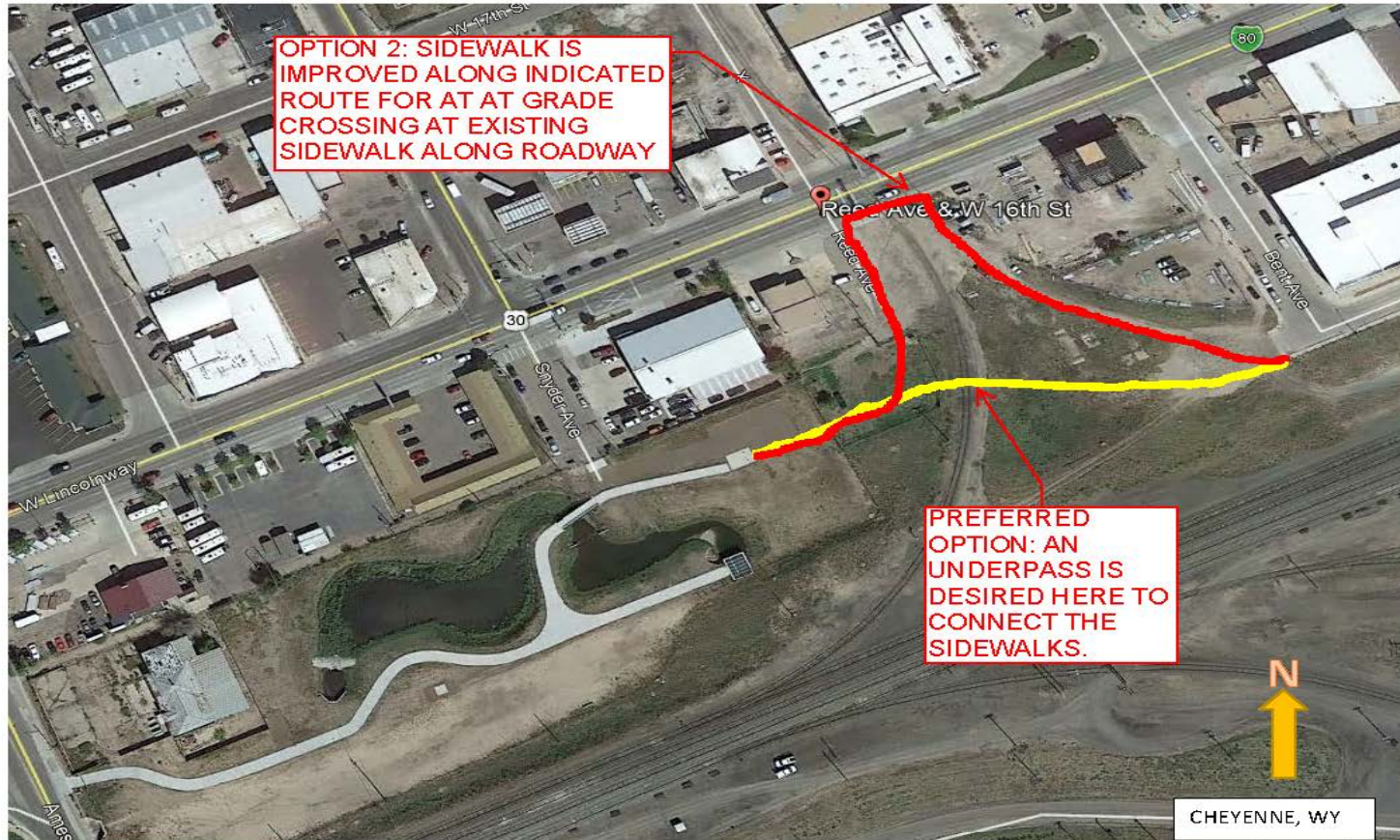
Concept Development



Design Development



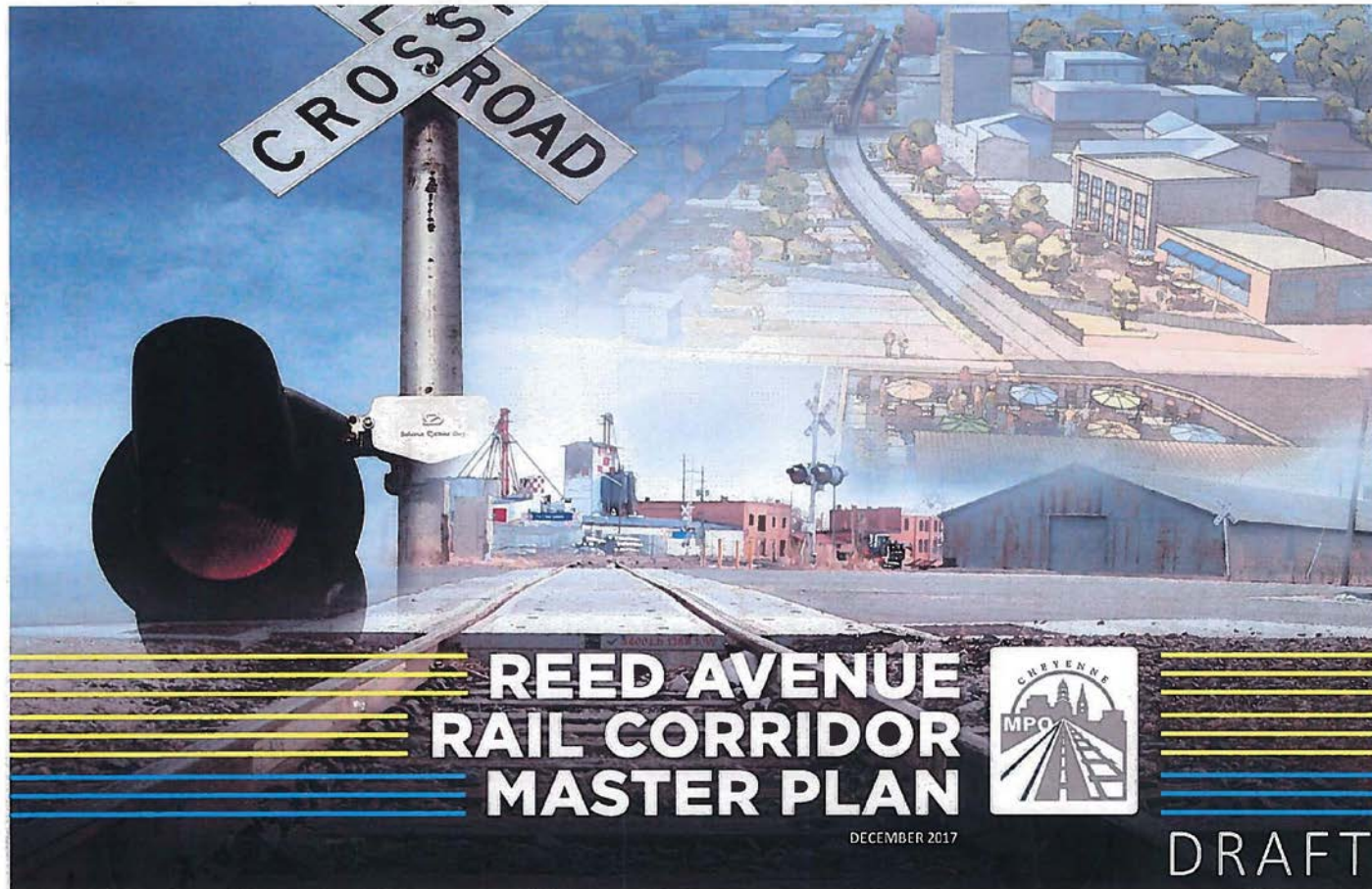
Downtown Connector



Proposed Underpass



Reed Avenue Urban Trail



Concept Development



CHEYENNE WESTEDGE PUBLIC WORKSHOP

Cheyenne West Edge Catalyst Sites



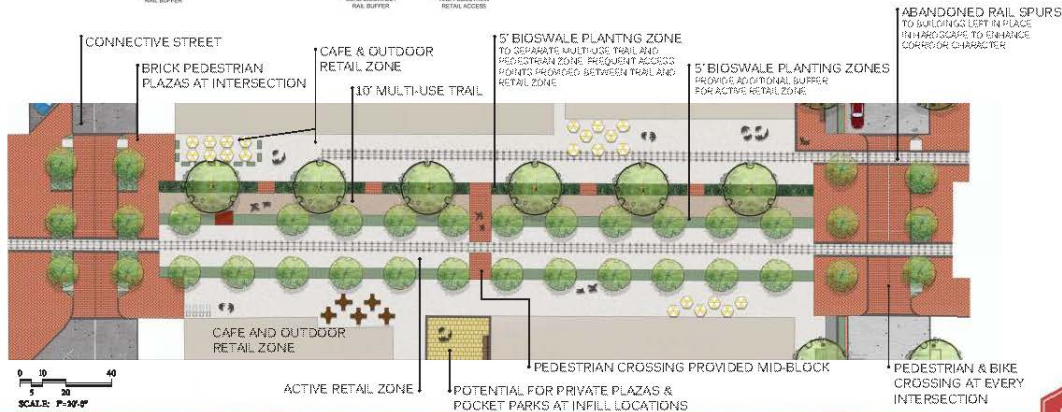
Urban Greenway



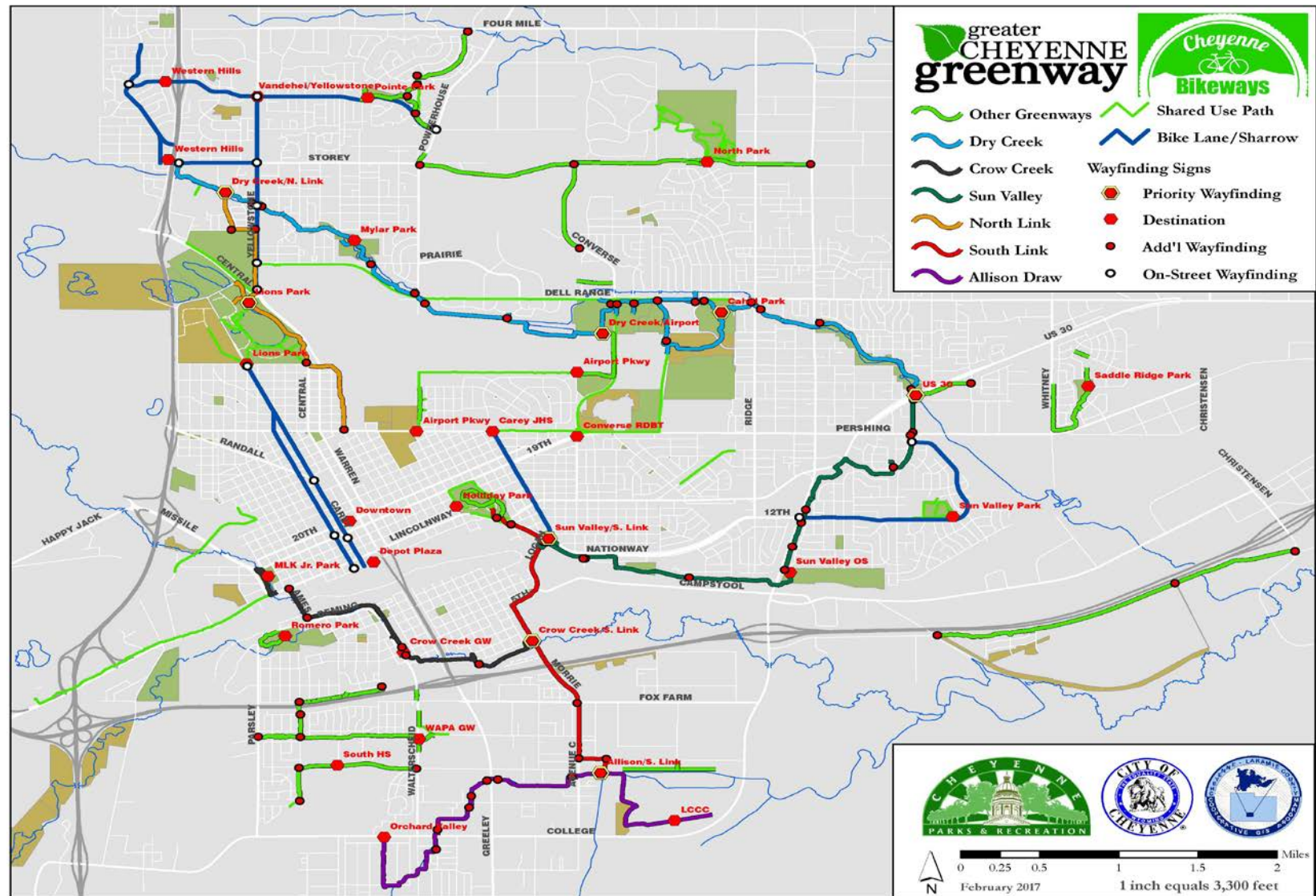
CHEYENNE WESTEDGE PUBLIC WORKSHOP



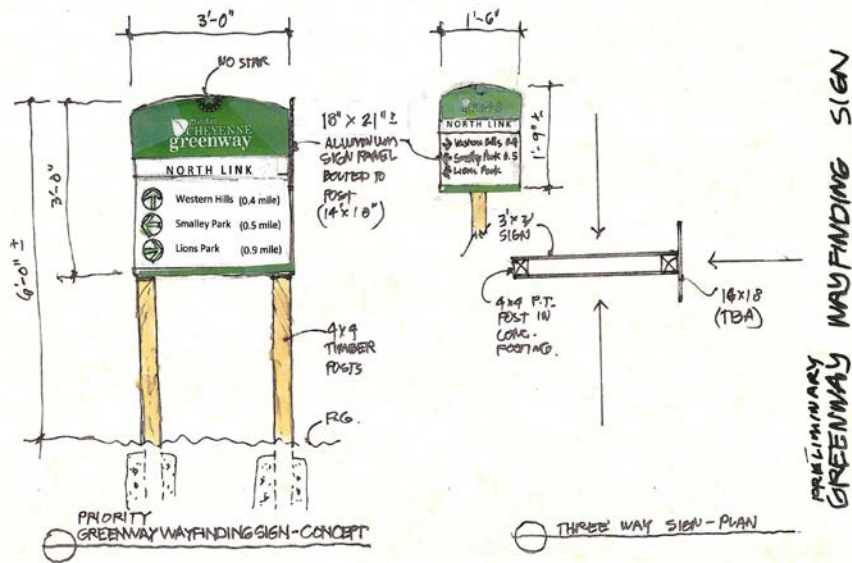
STREETSCAPE GUIDELINES -
RAIL CORRIDOR



Wayfinding



Sign Development



greater CHEYENNE greenway		
DRY CREEK		
↑ Western Hills	0.4	
← Smalley Park	0.5	
→ Lions Park	0.9	

greater CHEYENNE greenway		
CROW CREEK		
↑ Western Hills	0.4	
← Smalley Park	0.5	
→ Lions Park	0.9	

greater CHEYENNE greenway		
SUN VALLEY		
↑ Western Hills	0.4	
← Smalley Park	0.5	
→ Lions Park	0.9	

greater CHEYENNE greenway		
NORTH LINK		
↑ Western Hills	0.4	
← Smalley Park	0.5	
→ Lions Park	0.9	

greater CHEYENNE greenway		
SOUTH LINK		
↑ Western Hills	0.4	
← Smalley Park	0.5	
→ Lions Park	0.9	

greater CHEYENNE greenway		
ALLISON DRAW		
↑ Western Hills	0.4	
← Smalley Park	0.5	
→ Lions Park	0.9	

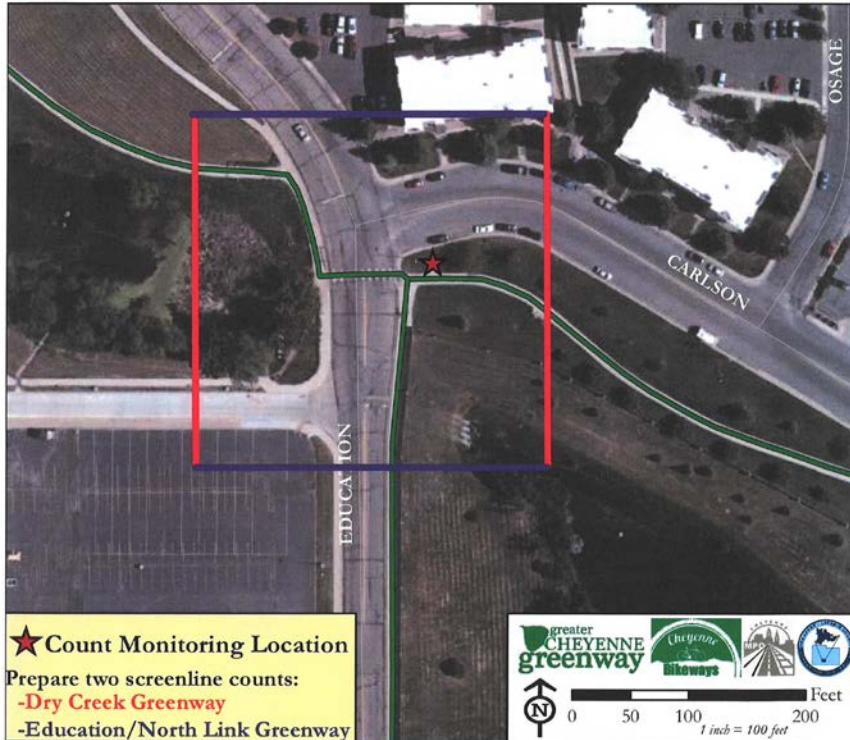
A Partnership with Leadership Cheyenne and the Board of Realtors

Bike Fix-it Stations



Bike Counts

Bicycle & Pedestrian Count Program Location 1 of 18: Carlson & Education



National Bicycle and Pedestrian Documentation Project: Forms

STANDARD SCREENLINE COUNT FORM

Name: RICHARD ZITA Location: #4 CENTRAL/YELLOWSTONE
 Date: 9-24-19 Start Time: 4:00 PM End Time: 6:00 PM
 Weather: SUNNY, WARM, 75°

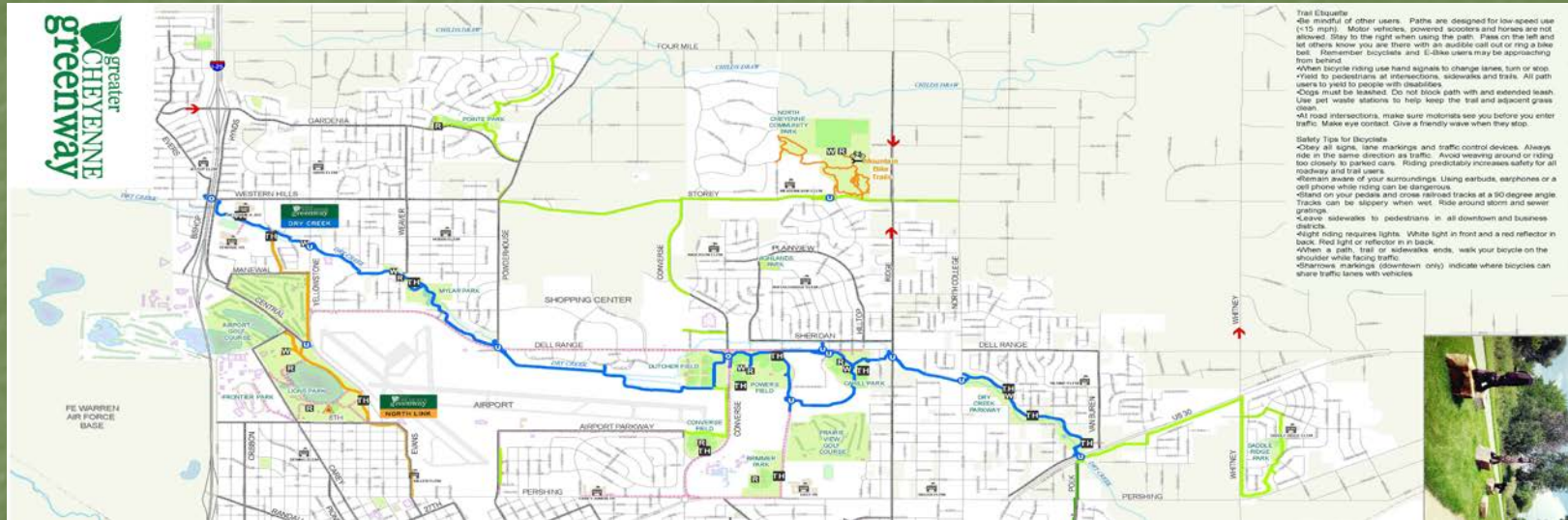
Please fill in your name, count location, date, time period, and weather conditions (fair, rainy, very cold).
 Count all bicyclists and pedestrians crossing your screen line under the appropriate categories.

- Count for two hours in 15 minute increments.
- Count bicyclists who ride on the sidewalk.
- Count the number of people on the bicycle, not the number of bicycles.
- Pedestrians include people in wheelchairs or others using assistive devices, children in strollers, etc.
- People using equipment such as skateboards or rollerblades should be included in the "Other" category.

	Bicycles		Pedestrians		Others
	Female	Male	Female	Male	
00-15		1			
15-30		1			
30-45		1		1	1
45-1:00		1			
1:00-1:15	1	1		1	
1:15-1:30		1			
1:30-1:45		1			
1:45-2:00					
Total	1	5		4	1

Runner
w/ Park

Greenway Map



Future Projects

- On Street Bike Lanes to Assist Access to Downtown and Surrounding Parks
- Complete Remaining 6th Penny Sections
- West Crow Creek Greenway to Happy Jack
- Update the Parks Master Plan
- East Cheyenne Community Park